



Impact

important

Forever USA 2021

Forever USA 2021

Forever USA 2021

GLOBAL WARMING
worldwildlife.org/species/polar

ED 185

CELAND

Celand got its name long ago when
with its sister island Greenland. Gre
while Iceland is lush with hot spring
keep other humans away from th
celand in the hope to ward off any v
is and elves along with other Vikin
ries to visit.

Monday	Wednesday	Thursday
.06		
.13		.07
.20		.14
.27		.21
		.28

KATHRYN CHUNN
Graphic Design 1 | Fall 2021

Saudi Arabia

THESE STAMPS REFLECT THE ARABIAN PEOPLES' HOMELAND, SAUDI ARABIA.

Saudi Arabian Nights



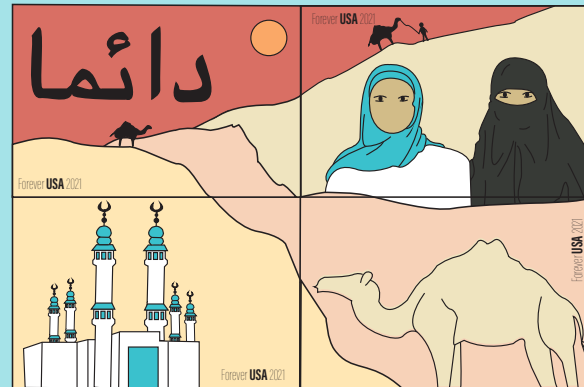
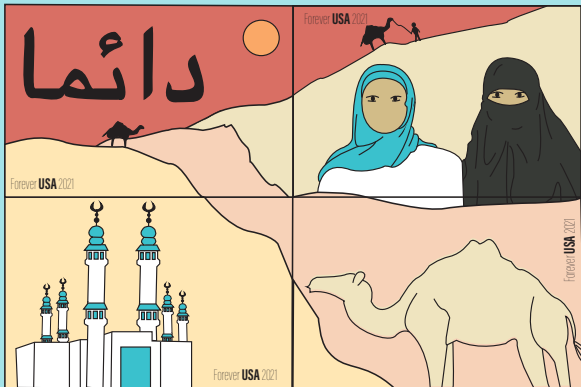
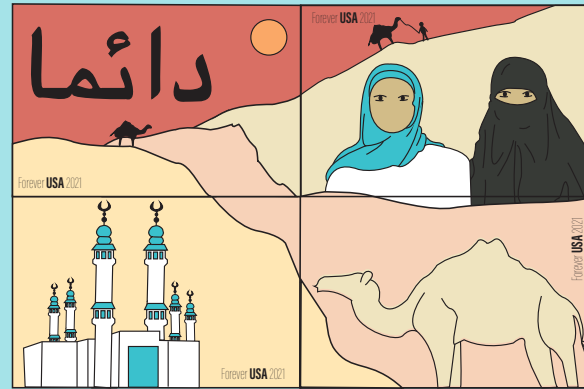
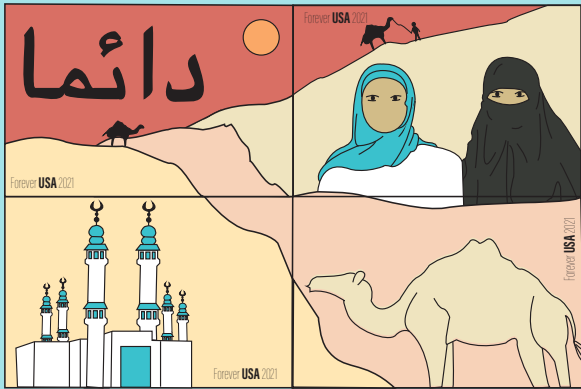
The word "Forever" written in Arabic, the primary language of Saudi Arabia. Arabic is a very complex language with a calligraphic alphabet. The stamps show the geographical profile of the country. Over ninety percent of the country is desert which includes expansive sand dunes. The dunes are mostly in the west and are the home to many activities like dune bashing, which includes sandboarding, and camel racing.

In Saudi Arabia is the Kings Camel Race which is the inspiration for the stamps. Camel and camel farming also make up a large market in Saudi Arabia. Every stamp include a camel with the first two having small camel silhouettes.

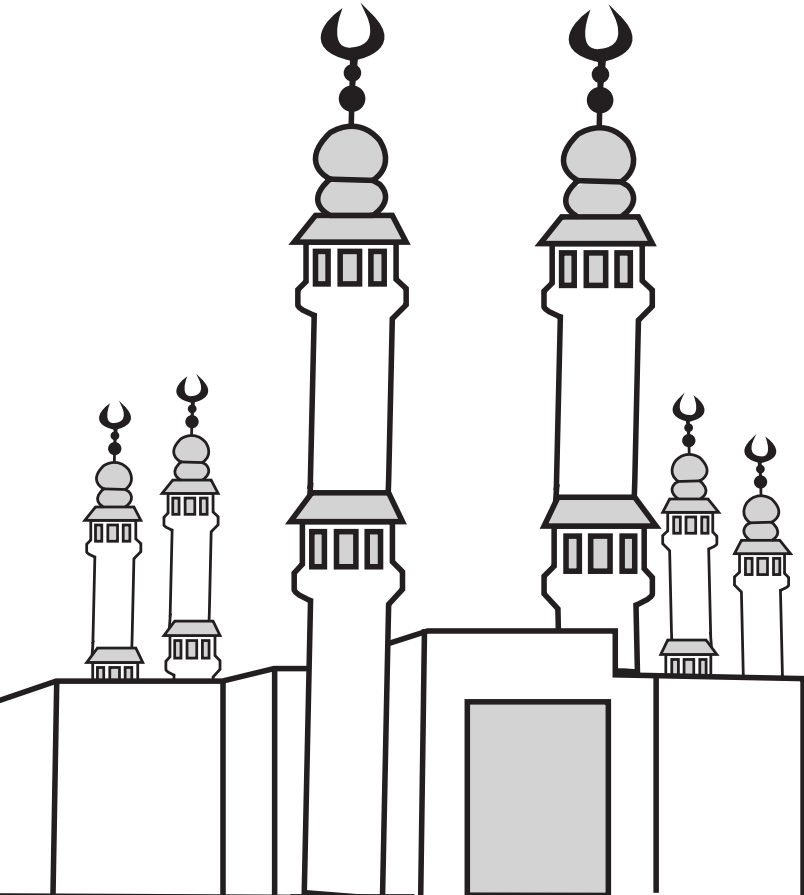
The stamps highlight the Islamic religion, the primary religion of Saudi Arabia. In the second stamp are wearing modest clothing, a hijab which is a headscarf which is a veil that shows only the eyes. The robe Muslim women wear is called an abaya which is traditional in Saudi Arabia. The third stamp shows the Great Mosque of Mecca, the holiest site in Islam in which almost all Muslims make pilgrimages to once in their lives. The fourth stamp shows a camel in the direction of Mecca daily.



Saudi Arabian Nights



Saudi Arabia



THESE STAMPS REFLECT THE ARABIAN PEOPLES' HOMELAND, SAUDI ARABIA.

The first stamp shows the word "forever" written in Arabic, the primary language of Saudi Arabia and the Arabian people. Arabic is a very complex language with a calligraphic alphabet. The underlying background of the stamps show the geographical profile of the country. Over ninety percent of Saudi Arabia is desert which includes expansive sand dunes. The dunes are mostly deserted or unsettled but are the home to many activities like dune bashing, which includes driving along the dunes, and camel racing.

The largest camel race in Saudi Arabia is the Kings Camel Race which is the inspiration for the fourth stamp. Camels and camel farming also make up a large market in Saudi Arabia. Every stamp but the third stamp include a camel with the first two having small camel silhouettes walking in the dunes.

The second and third stamps highlight the Islamic religion, the primary religion of Saudi Arabia. The two women shown in the second stamp are wearing modest clothing, a hijab which is a head covering and a niqab which is a veil that shows only the eyes. The robe Muslim women wear or the abaya, is optional in Saudi Arabia. The third stamp shows the Great Mosque of Mecca, a highly significant location in which almost all Muslims make pilgrimages to once in their lives and all Muslims pray in the direction of Mecca daily.



Bees Are Important



Sustainable Farming
Crops require pollination, which makes produce sustainable. Pollen also helps strengthen plants against pests.

Food Security
In order to feed the world we need sustainable produce and hardy food which is provided by pollinators like the bees, the main source of pollen for crops.

Ecosystem and Biodiversity
Bees provide pollen is required for the of the food pyramid plants. without there would no plants. Plants herbivores the carniv of life i bees and move ar

Save The **BEES**



Learn more

Donate 

sources
thebeeconservancy.org/10-ways-to-save-the-bees/
worldbeeday.org/en/about/the-importance-of-bees.html
thebeeconservancy.org/usa/sustainable-agriculture/save-the-bees/



The Buzz about **BEES**

Bees Polinate The World



There are more than **20,000** bee species around the world

Some common bee types in North America are: honey bees, carpenter, and bumble bees.

Save The **BEES**



Learn more

Donate



Sources
<https://thebeeconservancy.org/10-ways-to-save-the-bees/>
<https://www.worldbeeday.org/en/about/the-importance-of-bees.html>
<https://www.greenpeace.org/usa/sustainable-agriculture/save-the-bees/>

What is **killing** bees?

Pesticides and Synthetic Products

Deforestation

Habitat Destruction

Air pollution

Global warming

The Buzz about **BEES**

Bees **Polinate** The World



There are more than **20,000** bee species around the world

Some common bee types in North America are: honey bees, carpenter bees, and bumble bees.

Species are at risk of **extinction**



Bees provide pollen which is required for the basis of the food pyramid: plants, without pollen there would not be any plants. Plants feed the herbivores which then feed the carnivores. The circle of life is dependent on bees and the pollen they move around.

Ecosystem and Biodiversity

Crops require pollination, which makes produce sustainable. Pollen also helps strengthen plants against pests.

Food Security

In order to feed the world we need sustainable produce and hardy food which is provided by pollinators like the Bees, the main source of pollen for crops.

Bees Are Important





GLOBAL WARMING

www.worldwildlife.org/species/polar-bear



McSORLEY'S OLD ALE HOUSE

ESTABLISHED 1854

This Is Our
156 Year
And Ale
Is Well

This Is Our
156 Year
And Ale
Is Well

We were here
before you
were born.
Mc Sorley's

Mc Sorley's
Established
1854

Mc Sorley's
Established
1854

Owned And
Operated
By The
Maher
Family

ZAGAT
RATED
CITY'S
BEST







April



ICELAND

.04

Iceland got its name long ago when Vikings accidentally discovered it, along with its sister island Greenland. Greenland actually has a cold and icy climate while Iceland is lush with hot springs and rolling hills. The Vikings wanted to keep other humans away from the fantastical island so they named it Iceland in the hope to ward off any visitors. Many native Icelanders believe in trolls and elves along with other Viking lore, making it one of the most magical countries to visit.

Monday	Tuesday	Wednesday	Thursday	Friday	Saturday	Sunday
				.01	.02	.03
.04	.05	.06	.07	.08	.09	.10
.11	.12	.13	.14	.15	.16	.17 
.18	.19	.20	.21	.22	.23 	.24
.25	.26	.27	.28	.29	.30	.01



2021-2022



January



SWITZERLAND .01

Besides Swiss Chocolate, Switzerland is also famous for the Swiss Alps, which are pictured above. Many adventuresers travel to Switzerland to hike the Swiss Alps. An inverse of the red and white Swiss flag became the logo for the Red Cross because the founder Henry Dunant was a Swiss. Switzerland stands very politically neutral and the Swiss military acts as peacekeepers around the world.

Monday	Tuesday	Wednesday	Thursday	Friday	Saturday	Sunday
					.01	.02
.03	.04	.05	.06	.07	.08	.09
.10	.11	.12	.13	.14	.15	.16
.17	.18	.19	.20	.21	.22	.23
.24	.25	.26	.27	.28	.29	.30
.31	.01	.02	.03	.04	.05	.06



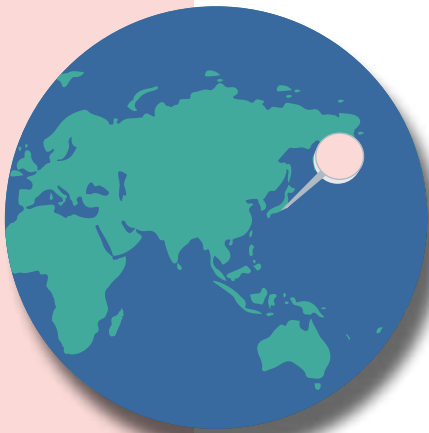
VIETNAM

.02

Vietnam was founded in 1919 by French colonists. One of the things Vietnam is known for is the Ba Na Cable Car which opened in 2013. The Ba Na Cable Car holds the world record for longest non-stop single-track cable car at 5801 meters in length. Its most famous attraction is the Golden Bridge, a 500-foot long bridge that appears to be held up over the world far below by two giant stone handspraventem.

Monday	Tuesday	Wednesday	Thursday	Friday	Saturday	Sunday
	.01	.02	.03	.04	.05	.06
.07	.08	.09	.10	.11	.12	.13
.14	.15	.16	.17	.18	.19	.20
.21	.22	.23	.24	.25	.26	.27
.28	.01	.02	.03	.04	.05	.06

March



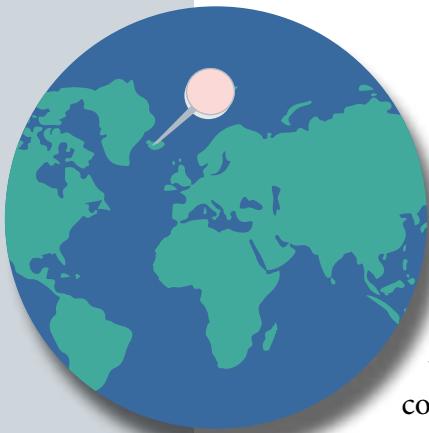
JAPAN

.03

Cherry blossoms are a symbol of spring, especially in Japan. People have viewing parties to watch the cherry blossoms while eating a picnic lunch with family and friends.

Monday	Tuesday	Wednesday	Thursday	Friday	Saturday	Sunday
	.01	.02	.03	.04	.05	.06
.07	.08	.09	.10	.11	.12	.13
.14	.15	.16	.17	.18	.19	.20
.21	.22	.23	.24	.25	.26	.27
.28	.29	.30	.31	.01	.02	.03

April



ICELAND

.04

Iceland got its name long ago when Vikings accidentally discovered it, along with its sister island Greenland. Greenland actually has a cold and icy climate while Iceland is lush with hot springs and rolling hills. The Vikings wanted to keep other humans away from the fantastical island so they named it Iceland in the hope to ward off any visitors. Many native Icelanders believe in trolls and elves along with other Viking lore, making it one of the most magical countries to visit.

Monday	Tuesday	Wednesday	Thursday	Friday	Saturday	Sunday
				.01	.02	.03
.04	.05	.06	.07	.08	.09	.10
.11	.12	.13	.14	.15	.16	.17 
.18	.19	.20	.21	.22	.23 	.24
.25	.26	.27	.28	.29	.30	.01

May



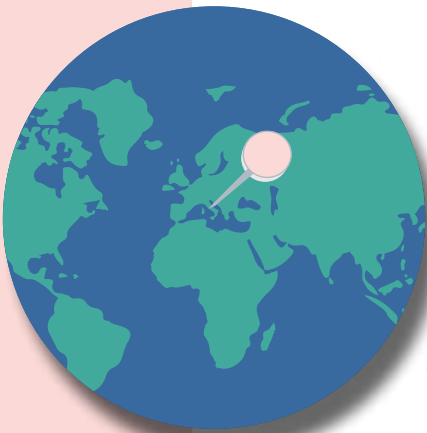
ENGLAND

.05

Something England is known for is its tea. Because of how late people eat dinner, they have afternoon tea, which contains tea, various sandwiches, and various sweets. Afternoon tea could include anything from simple toast and butter to a complicated pastry. When tea time rolls around, it is a great time to unwind and restpraventem.

Monday	Tuesday	Wednesday	Thursday	Friday	Saturday	Sunday
						.01
.02	.03	.04	.05	.06	.07	.08
.09	.10	.11	.12	.13	.14	.15
.16	.17	.18	.19	.20	.21	.22
.23	.24	.25	.26	.27	.28	.29
.30	.31	.01	.02	.03	.04	.05

June



ITALY

.06

Italy is a country in southern Europe known for its food culture and art history. Some popular destinations in Italy include Florence, Venice which is pictured below, and Rome. The Rome Colosseum is a must-see and one of the 7 wonders of the world. Italy also houses famous artworks from Michelangelo, including his statue of David. Italy is also home to the smallest country in the world, The Vatican.

Monday	Tuesday	Wednesday	Thursday	Friday	Saturday	Sunday
		.01	.02	.03	.04	.04
.06	.07	.08	.09	.10	.11	.12
.13	.14	.15	.16	.17	.18	.19
.20	.21	.22	.23	.24	.25	.26
.27	.28	.29	.30	.01	.02	.03

July



FRANCE

.07

King Philip II ordered the creation of the Louve in the late 12th century. Many famous art pieces are stored here, such as the Mona Lisa which was stolen from Italy. There is great debate about whether France should return the Mona Lisa to Italy. One could get lost looking at all of the paintings and art pieces in the museum.

Monday	Tuesday	Wednesday	Thursday	Friday	Saturday	Sunday
				.01	.02	.03
.04	.05	.06	.07	.08	.09	.10
.11	.12	.13	.14	.15	.16	.17
.18	.19	.20	.21	.22	.23	.24
.25	.26	.27	.28	.29	.30	.31
.01	.02	.03	.04	.05	.06	.07

August



IRELAND

.08

Ireland's culture revolves around its rich history and mainstream Western culture. Ireland is known for its Beer and soccer and for influencing the Western holiday Saint Patrick's Day. Pictured above is a well-known Irish pub, where Irish locals and tourists gather to socialize, eat, and drink. Ireland is an island country and is separated between Northern Ireland and The Republic of Ireland.

Monday	Tuesday	Wednesday	Thursday	Friday	Saturday	Sunday
.01	.02	.03	.04	.05	.06	.07
.08	.09	.10	.11	.12	.13	.14
.15	.16	.17	.18	.19	.20	.21
.22	.23	.24	.25	.26	.27	.28
.29	.30	.31	.01	.02	.03	.04

September



SPAIN

.09

One of the great wonders of Spain is The Plaza de España, it is an architectural marvel that many travel the world to see and walk in. The Plaza de España was designed by the great Seville architect Aníbal González. Along the entire perimeter of the plaza, there is a canal of 515 meters in length. The Plaza de España includes a total area of 50,000 square meters

Monday	Tuesday	Wednesday	Thursday	Friday	Saturday	Sunday
			.01	.02	.03	.04
.05	.06	.07	.08	.09	.10	.11
.12	.13	.14	.15	.16	.17	.18
.19	.20	.21	.22	.23	.24	.25
.26	.27	.28	.29	.30	.01	.02

October



ISRAEL

.10

Haifa, Israel holds the UNESCO World Heritage Site, one of the most beautiful gardens in the world. This is the holiest site of the Bahai faith. The Bahai World Center in Haifa, part of the Bahai Gardens but off-limits to tourists, is where the faith's international collective body makes its decisions in the hands of nine elected leaders. There are tours for people who are not in the faith.

Monday	Tuesday	Wednesday	Thursday	Friday	Saturday	Sunday
					.01	.02
.03	.04	.05	.06	.07	.08	.09
.10	.11	.12	.13	.14	.15	.16
.17	.18	.19	.20	.21	.22	.23
.24	.25	.26	.27	.28	.29	.30
.31 	.01	.02	.03	.04	.05	.06


November



THAILAND

.11

Thailand is home to The Big Buddha. The Big Buddha was constructed beginning in 1990 and was finished on 29 December 1993. The Buddha statue depicts Gautama in a sitting position and is 148 feet tall and 83.5 feet wide. It is made of concrete and covered with Burmese white marble. Many who practice the Buddhism faith will travel here to see The Big Buddha, as Gautama is a Buddhist figurehead.

Monday	Tuesday	Wednesday	Thursday	Friday	Saturday	Sunday
	.01	.02	.03	.04	.05	.06
.07	.08	.09	.10	.11	.12	.13
.14	.15	.16	.17	.18	.19	.20
.21	.22	.23	.24 	.25	.26	.27
.28	.29	.30	.01	.02	.03	.04


December



INDIA

.12

India is home to one of the wonders of the world, the Taj Mahal. The Taj Mahal was built in Agra between 1631 and 1648 by order of the Mughal emperor Shah Jahan in memory of his favourite wife. It is the jewel of Muslim art in India and one of the universally admired masterpieces of the world's heritage.

Monday	Tuesday	Wednesday	Thursday	Friday	Saturday	Sunday
			.01	.02	.03	.04
.05	.06	.07	.08	.09	.10	.11
.12	.13	.14	.15	.16	.17	.18
.19	.20	.21	.22	.23	.24	.25
.26 	.27	.28	.29	.30	.31	.01



TRAVEL THE WORLD THROUGH THE MONTHS

Enjoy a sense of whimsy as you travel the world in this calendar, featuring 12 different countries. Explore several of the wonders on the world like the Taj Mahaal, and learn about the cultures of the featured countries.



January- Switzerland

February- Vietnam

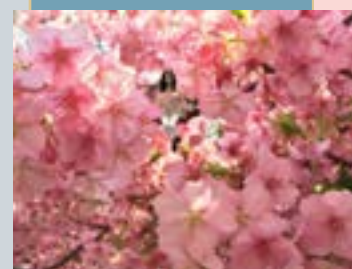
March- Japan

April- Iceland

May- England

June- Italy

July- France



August- Ireland

September- Spain

October- Israel



November- Thailand

December- India

